



**PERFORMANCE  
UNDER PRESSURE**

**DURA-CARE™ SERIES 7200 TL-FBO ICU/CCU MANUAL SLIDING DOOR**

**Designed to meet the demand for greater clear opening width while providing advanced features required in ICU/CCU environments.**

Regain precious wall space with our FGI compliant, industry-leading package, providing 44" clear door opening with an 8' wide frame. Gain quick access, by simply pushing the sliding panel open at any time in the direction of egress. Achieve near full width opening with our new patent-pending bottom pivot design allowing safe and convenient breakout of both panels from the full open position.

**STANLEY.** Access Technologies

MECHANICAL

ELECTRONIC  
LOCKING

AUTOMATIC  
OPENING

ACCESS CONTROL/  
SOFTWARE

INTRUSION

IDENTITY

TRACKING

Automatic and manual sliding, swinging, and revolving door systems. Customized solutions for every application.

# DURA-CARE™ SERIES 7200 TL-FBO ICU/CCU MANUAL SLIDING DOOR

**Integrated Closer (optional)**  
Automatically Closes Door

**Partial Break Out**  
Sliding panel conveniently breaks out and any point in travel for quick egress

**Positive Latch**  
Self-latching

**Full Break Out**  
When sliding panel is completely open, both panels can break out for a larger opening

**Concealed Sweeps (optional)**  
for positive/negative pressure environments



**Smoke and Draft Seals (optional)**  
Leakage rated under UL1784 and labeled as a smoke barrier

**Wide Opening**  
44" Clear door opening (with 8-foot package) for patient bed and equipment transfers without having to break out the door panels

**Trackless**  
Trackless design for smooth and safe patient bed and equipment transfers



## New features and functionality.

- **Easy enter and exit with patient beds and equipment** – 44" (for 8' package) clear door opening, the largest in the industry
- **Flexibility** – Sliding panel breakout at any point in travel
- **Transport with safety and comfort** – Trackless design provides smooth transportation of patients and equipment

## Optional Features

- **Smoke and draft protection** – Leakage rated and listed under UL1784 and labeled as an effective smoke barrier
- **Positive/Negative Pressure Environments** – Simply add concealed sweeps to a leakage rated system for positive/negative pressure applications
- **Anti-microbial protection** – Prevents the spread of infections. Available on touch-points or full package
- **Self Closing** – Integrated concealed system available.
- **Electronic Privacy Glass** – Instantly turns from clear to opaque with the flick of a switch for patient privacy

## STANLEY. Performance in Action.

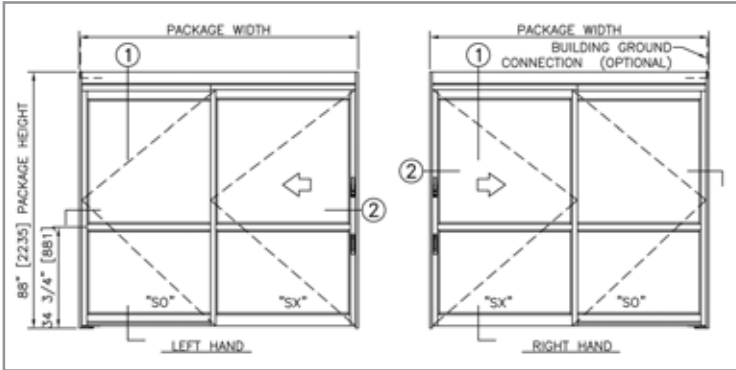
When it comes to automatic door openings, STANLEY is setting the standard for tough, dependable, long-lasting performance. Since 1932, we've grown into one of the largest manufacturers, installers and service providers of automatic doors in North America.

From engineering and development, to product delivery and quality, STANLEY is constantly moving forward with innovative solutions you can depend on.

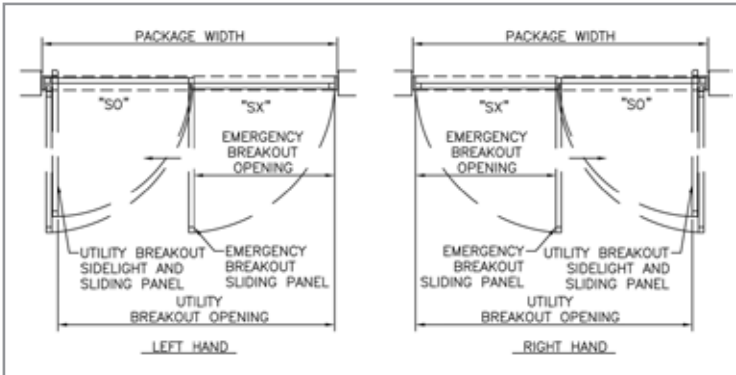
**STANLEY®**

# DURA-CARE™ SERIES 7200 TL-FBO ICU/CCU MANUAL SLIDING DOOR

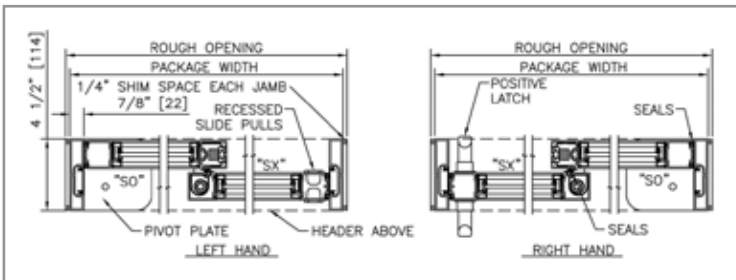
## Views



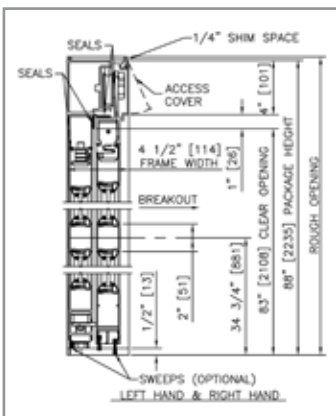
Elevation View



Plan View



Horizontal Section



Vertical Section

## Product Specifications

Description	Standard Configuration	Options
Header Dimension	4.0" (h) x 4.5" (w)	8" high x 6" deep for Privacy Glass
Stiles	Narrow (1.75")	
Glass Stops	0.25"	0.50", 0.625", 1.0"
Bottom Rails	4"	6", 8", 10", 12"
Jamb Dimension	4.5" x 0.875"	4.5" x 1.75"
Finish	Clear	Special Finish Available
Package Height	88.0"	Max. Height 92.0"
Width - 2 Panel	96"	Max Width 108"
Clear Door Opening (CDO)	44" at package width of 96"	
High Temperature Gaskets	Included	
Integrated Self-Closer	Optional (only available up to 96.0" wide packages)	
Positive Latch	Optional (standard feature w/Smoke & Draft)	
Listings/Ratings	UL1784, NFPA 105, +/- Pressure	
+/- Pressure Rating	Max. rating with optional concealed sweeps	
Breakout for Emergency Egress, SX Only	Included	
Full Breakout at Full Open Position	Included	
Codes	IBC, UL, NFPA, FGI/AIA	
Anti-Microbial Protection	Optional - Touchpoints or full-package	

\*For package width greater than 96" or if glass thickness is greater than 0.25", a bottom guide support roller is included for SX panels.

Single Slide Formulas – Narrow Stile	
Package Width	$= 2x \text{ Clear Door Opening} + 7.6"$
Clear Door Opening	$= \frac{1}{2} \text{ Package Width} - 3.8"$
Emergency Breakout Width	$= \text{Clear Door Opening} + 3.5"$
Utility Breakout Width	$= \text{Clear Door Opening} + 3.5"$
SX Door Panel Width	$= \frac{1}{2} \text{ Package Width} + 1.6"$
SO Door Panel Width	$= \frac{1}{2} \text{ Package Width} - 1.3"$

Typical Package Dimensions (Narrow Stile)					
Package Width	Nominal Clear Door Opening	Sliding Door Nominal Width	Sidelight Nominal Width	Emergency Breakout Nominal Width	Utility Breakout Nominal Width
84"	38.2"	43.6"	40.8"	41.7"	78.0"
96"	44.2"	49.6"	46.78"	47.7"	90.0"
108"*	50.2"	55.6"	52.8"	53.7"	102.0"