

Stanley Rush Series 3500 Revolving Door



A CLASSIC AND CONTEMPORARY STYLE REVOLVING DOOR ENTRANCE

- All glass - no visible door stiles
- Enclosure drum wall base rail surface mounted to the floor
- Upper and lower pressure release mechanisms are concealed and directly connected to door rails allowing for clear, unobstructed door lines
- Available in 3-Wing or 4-Wing design
- Standard diameters 6'6" to 9' 0"
- Optional Rushclad - adhesive applied wrap around design cladding for high quality , long lasting finish



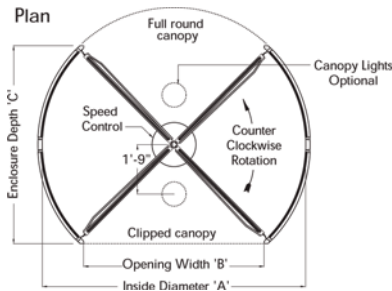
STANLEY Rush Products Group

65 Riviera Drive
Markham, ON, L3R 5J6
(T) 905-944-8005
(F) 905-944-8006

StanleyRush@sbdinc.com
www.stanleyrush.com

Stanley Rush Series 3500 Revolving Door

4-Wing Model



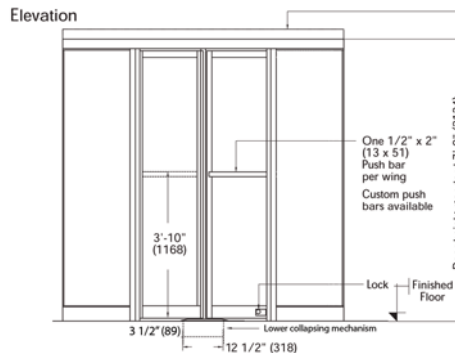
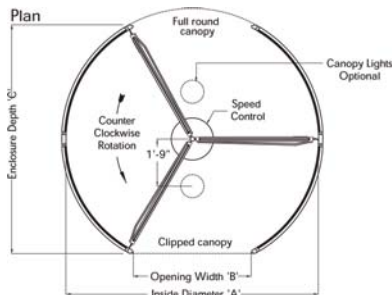
Standard 4-Wing Dimensions

DOOR DIAMETER – A	OPENING WIDTH – B	ENCLOSURE DEPTH - C
*6' 6" (1981)	4' 5 1/4" (1353)	4' 10 5/8" (1489)
*7' 0" (2134)	4' 9 1/2" (1461)	5' 2 7/8" (1597)
*7' 6" (2286)	5' 1 3/4" (1568)	5' 7 1/8" (1705)
*8' 0" (2438)	5' 6" (1676)	5' 11 3/8" (1813)

Standard 3-Wing Dimensions

DOOR DIAMETER – A	OPENING WIDTH – B	ENCLOSURE DEPTH - C
*6' 6" (1981)	3' 0 3/8" (924)	5' 11 1/4" (1810)
*7' 0" (2134)	3' 3 3/8" (1000)	6' 4 1/4" (1937)
*7' 6" (2286)	3' 6 3/8" (1076)	6' 9 7/16" (2069)
*8' 0" (2438)	3' 9 3/8" (1153)	7' 2 5/8" (2200)

3 Wing Model



Standard 3" high canopy
Optional 8" high canopy
is required if using over-head
speed controllers

Custom Dimensions are available in almost any size.

*Denotes standard size doors in 7' 0" (2134) height. All other sizes and heights are custom fabricated and finished to suit specific job requirements.

IMPORTANT NOTICE: 3-WING models have a smaller opening width and therefore we recommend that 2 units be considered for in/out traffic flow.

Series 3500 Features and Specifications:

Description	Standard Configuration	Options
Diameters	6' to 9' (1829 to 2743 mm)	consult factory for sizes
Heights	7' standard (2134 mm)	consult factory for sizes
Canopy	3 inch minimum	consult factory
wings	3 or 4 wing manual	hydraulic power assist where applicable
stiles	narrow stile	medium or wide stile in clad finishes
locks	two mortised in bottom rails of wings	
wing glass	1/2" (12 mm)	consult factory
drum wall	5/16" (8mm)	consult factory
lights	none	3-1/4" diameter LED optional
finish	anodized aluminum, clear, bronze	Rushclad cladding, paint
Roof	full circular aluminum	to match door finish
ceiling	solid one or two piece to match finish	ceiling hatch
design/testing	ANSI 156.27, see specifications	
push bars	1" (25 mm) diameter round	consult factory



STANLEY Rush Products Group

65 Riviera Drive
Markham, ON, L3R 5J6
(T) 905-944-8005
(F) 905-944-8006

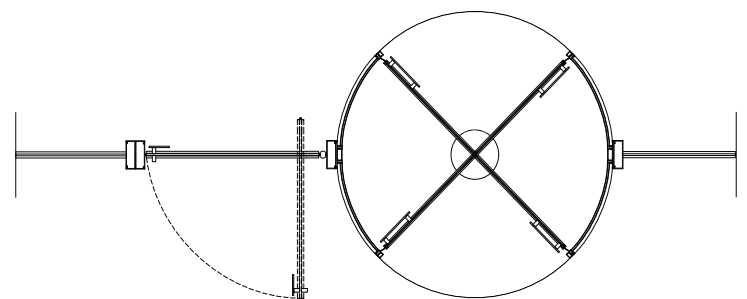
StanleyRush-sales@sbdinc.com
www.stanleyrush.com



Farid Motamedi, Architect

#3500 Series Revolving Door
#2050 Series Pivot Door

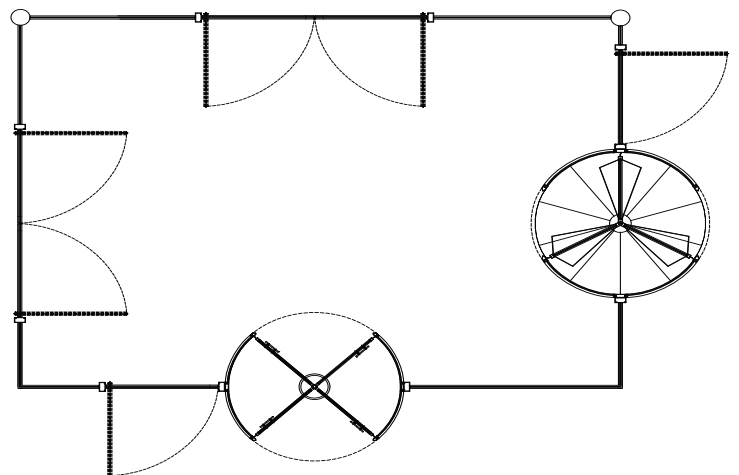
Mirror Finish Stainless Steel Entrance
with Stainless Steel Floor Grill Interior
quadrant





WZMH Associates

#3500 Series Revolving Door
#4500 Series Revolving Door
with glass screens and canopy
Mirror Finish Stainless Steel

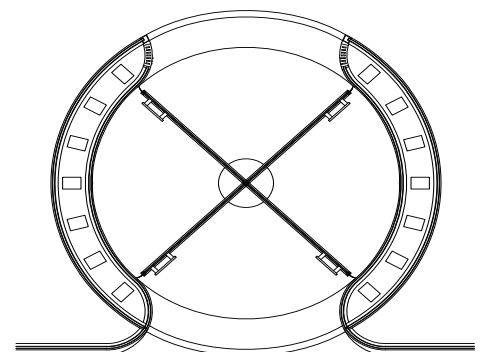




Webb Zerafa Menkes Housden Partnership

#3500 Series Revolving Door
Custom Double Wall Air Plenum

Rolling Security Screens
Stainless Steel Blend 'S' Finish

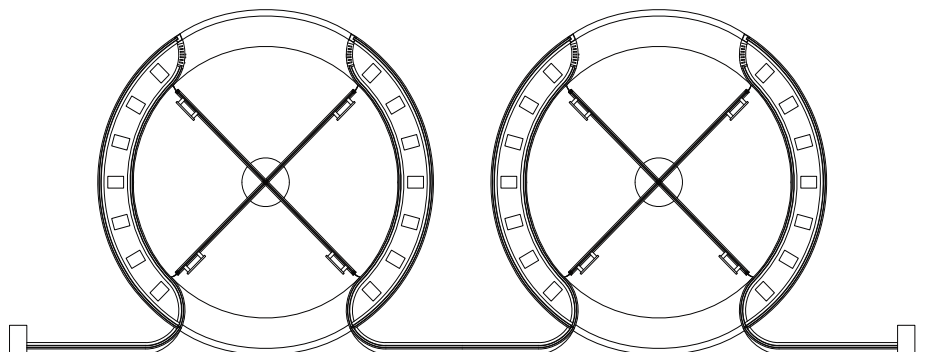




Webb Zerafa Menkes Housden Partnership

#3500 Series Revolving Doors

Custom Double Wall Air Plenum
Stainless Steel Blend 'S' finish





Moriyama and Toshima Architects

#3500 Series Revolving Door
#3060 Series Balanced Doors

Entrances with structural
segmented glass wall com-
plete with fins and fittings
Blend 'S' Finish Stainless Steel

